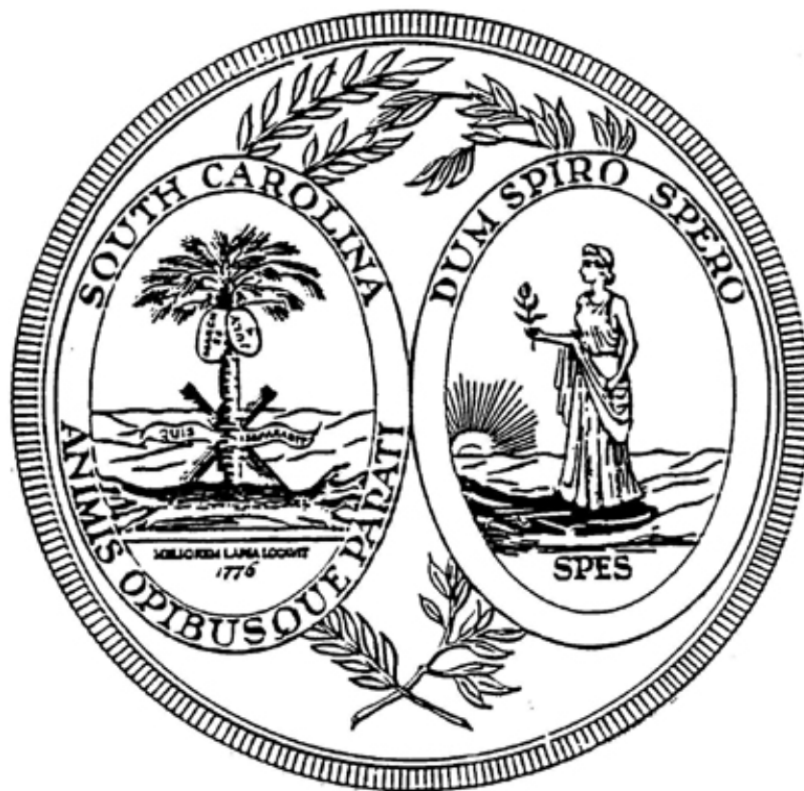


**SOUTH CAROLINA  
HIGHER EDUCATION  
TUITION GRANTS COMMISSION**



**ANNUAL REPORT  
2010-2011**

**SOUTH CAROLINA HIGHER EDUCATION  
TUITION GRANTS COMMISSION**

TO: Her Excellency, Governor Nikki Randhawa Haley,  
Chairman, State Budget and Control Board, and the  
Members of the South Carolina General Assembly

The South Carolina Higher Education Tuition Grants Commission respectfully submits for consideration its annual report. Included in this report are general data and statistics concerning the program and specific data covering the 2010-2011 award year.

Respectfully Yours,

Dr. Elizabeth Fleming  
2010-2011 Chair  
South Carolina Higher Education  
Tuition Grants Commission

# TABLE OF CONTENTS

	<u>Page</u>
South Carolina Tuition Grants - Philosophy and Purpose.....	3
Commission Members and Staff.....	4
Statutory Authority for the Commission.....	5
History of the Commission.....	5
Program Administered by the Commission.....	5
Public Service Activities and Resources.....	6
2010-2011 Statistical Summary.....	7

## **APPENDICES:**

Appendix A:	Tuition Grants Awards for 2010-2011	9
Appendix B:	Tuition Grants Recipients by County	10
Appendix C:	Tuition Grants Recipients by Ethnic Group	11
Appendix D:	Grants Awarded by Family Income Range	12
Appendix E:	History – Awards, State Funds and Total Funds	13
Appendix F:	History – Average Grants and Average Tuition & Fees	14
Appendix G:	Analysis of Program Administrative Costs	15
Appendix H:	Total Undergraduate Full-time Students	16
Appendix I:	South Carolina Full-time Students	17
Appendix J:	College Fall Headcount Enrollments (Public & Private)	18
Appendix K:	SC Tuition Grants Commission: Organizational Chart	19

# **SC HIGHER EDUCATION TUITION GRANTS PHILOSOPHY AND PURPOSE**

“Whereas, the General Assembly finds that as a result of the rising school population and the continuously rising cost of providing proper facilities for the higher education of young people, there exists in this State an urgent need to use all available educational resources wisely. A lack of higher education facilities is inimical to the welfare and prosperity of all residents of the State and to the continued financial growth of the State;

Whereas, the General Assembly also finds that within the State there exists several accredited independent institutions of higher learning whose facilities could be used effectively in the public interest by providing additional space for students thereby eliminating the need for substantial increases in capital outlay funds; and

Whereas, it is vital to the growth of the State that all qualified residents be offered the opportunity for furthering their education.

To achieve this in the most economical manner, students willing to bear the major cost of their education expenses should be assisted where financial need exists in an effort to make their educational goals more readily attainable.”

-- The Preamble to the Tuition Grants Law

**SOUTH CAROLINA HIGHER EDUCATION  
TUITION GRANTS COMMISSION  
2010-2011**

**COMMISSION MEMBERS**

Dr. Elizabeth Fleming  
Chair  
Converse College  
Spartanburg, SC

Dr. Evans Whitaker  
Vice Chair  
Anderson University  
Anderson, SC

Dr. Robert Wyatt  
Secretary  
Coker College  
Hartsville, SC

Dr. Bill Jones  
Columbia International University  
Columbia, SC

Dr. Stephen Jones  
Bob Jones University  
Greenville, SC

President Rod Smolla  
Furman University  
Greenville, SC

Dr. Henry Tisdale  
Claflin University  
Orangeburg, SC

Dr. Pamela Wilson  
Allen University  
Columbia, SC

Dr. Garrison Walters  
Commission on Higher Education  
Columbia, SC

**STAFF MEMBERS**

Mr. Earl L. Mayo, Jr. ....Director

Mrs. Katherine H. Harrison.....Deputy Director

Mrs. Toni Cave.....Financial Aid Counselor

Ms. Gena Miles.....Financial Officer

## **STATUTORY AUTHORITY FOR THE COMMISSION**

The General Assembly of the State of South Carolina, during the 1970 session, passed Act 1191 creating the Higher Education Tuition Grants Commission. This Commission was created as a State agency charged with the responsibility for overseeing the operation of the Tuition Grants Program.

## **HISTORY OF THE COMMISSION**

In 1970, the General Assembly passed a bill that created the Higher Education Tuition Grants Commission, an agency that was charged with the responsibility of administering tuition grants to independent college students. The Governor signed the bill on May 1, 1970. The original appropriation was \$5,000. No awards were made the first year. In 1971-72, the program aided 43 students. In 1972-73, a total of 134 students received awards.

The Tuition Grants Program has assisted many needy students since its inception in 1970. Since the beginning of the program, over 340,000 awards have been made.

## **PROGRAM ADMINISTERED BY THE COMMISSION**

The South Carolina Higher Education Tuition Grants Commission has been charged by the General Assembly with the responsibility of administering the Tuition Grants Program. This program allows South Carolina residents who attend participating independent colleges in this state to receive financial assistance from the state if they meet the eligibility requirements of the program.

All grant recipients must be full-time students, of good moral character, must demonstrate financial need, and must meet specified standards of academic merit.

Eligible students may apply their grants only toward tuition and fees at a South Carolina independent college that is non-profit and accredited by the Southern Association of Colleges and Secondary Schools or an independent bachelor's level institution chartered before 1962 whose major campus and headquarters are located within South Carolina. The amount of the grant may not exceed the student's financial need or the total of tuition and fees charged by the college. Also, the amount may not exceed the average annual state subsidy for the students who attend the four-year public colleges in the state.

In September and October of each year, the Tuition Grants Commission distributes information brochures to all South Carolina secondary schools and to eligible colleges. The guidance offices at the secondary schools and the financial aid offices at the colleges distribute these materials to students throughout the state.

## **2010-2011 ACADEMIC YEAR**

The Commission received 32,629 complete applications for grants for the 2010-2011 award year.

The Tuition Grants Program has opened the door of educational opportunity to thousands of South Carolinians. A survey of grant recipients has indicated that, if they had not received tuition grant assistance, many of them would not have gone to college or would have enrolled in one of South Carolina's public colleges at a greater cost to the State.

## **PUBLIC SERVICE ACTIVITIES**

During the 2010-2011 year, Commission staff members participated in seven professional programs for parents and students. These financial aid information sessions were conducted throughout the State and were attended by nearly 700 participants. Additionally, throughout the year, the staff participated in seven statewide conferences held for high school guidance counselors. Over 500 high school guidance counselors and college admissions officers attended these meetings. During October, the Commission conducted its annual training session for financial aid administrators with over 35 people in attendance. The staff also conducted on-site training workshops for colleges as needed. Executive staff presented Program information at various meetings of the South Carolina Independent Colleges and Universities, and at the annual statewide conference of the South Carolina Association of Student Financial Aid Administrators.

On January 30, 2011, the Commission's Executive Director participated in a statewide South Carolina Educational Television (SCETV) broadcast. The January broadcast was the annual SCETV program titled *Finding Money for College*. This two-hour SCETV broadcast was a live interactive telecast focusing on financial aid for postsecondary education.

The Commission's web site ([.sctuitiongrants.com](http://.sctuitiongrants.com)) provides students, parents, and the general public important program information, links to South Carolina's independent colleges, links to federal financial aid information, and links to necessary program documents for students and parents. Additionally, the Commission's web site provides a separate, secure section for college financial aid offices for expediting the processing of program reports. Colleges download information securely via the Internet instead of depending upon hard-copy reports or diskettes to arrive in the mail. This provides the Commission the ability to quickly disburse grant dollars to students.

## **RESOURCES**

The State Appropriation for Tuition Grants in 2010-2011.....	<b>\$21,736,438</b>
State Lottery Funds.....	<b>\$7,766,604</b>
Childrens' Education Endowment Funds.....	<b>\$4,476,615</b>
Interest from Undisbursed Funds.....	<b>\$13,604</b>
Matching Funds through the Federal LEAP Program.....	<b>\$352,841</b>
Matching Funds through the Federal SLEAP Program.....	<b><u>\$481,204</u></b>

Total Grants Program Funding..... **\$34,827,306**

\*\*Total Administrative Costs for 2010-2011..... **\$312,785**

\* **Total administrative costs were only 0.89% of the total agency appropriation.**

## **2010-2011 STATISTICAL SUMMARY**

1. Students at twenty-one (**21**) independent colleges in South Carolina were eligible to participate in the Tuition Grants Program during 2010-2011. These colleges enrolled a total of **31,114** full-time undergraduate students. Nearly 66 percent (**20,495**) were South Carolina residents.
2. Over 24 percent (**24.3%**) of the 2010-2011 total award dollars went to South Carolina residents attending the five historically black colleges that participate in the program.
3. In 2010-2011, over forty-five percent (**45.35%**) of South Carolina Tuition Grants recipients were minority students. African-American students represented over forty-two percent (**42.60%**) of recipients. As a percentage of recipients, the South Carolina Tuition Grants Program serves more African-American students than any other state-funded program.
4. Over seventy-eight percent (**78.12%**) of SCTG recipients were dependent upon their parents/guardians for financial support. Over twenty-one percent (**21.88%**) were totally independent and relied only on their own income or that of a spouse.
5. Over sixty-six percent (**66.8%**) of the 2010-2011 SCTG recipients had family incomes of **\$60,000 or less**. The average income for all 2010-2011 Tuition Grant recipients was \$46,093.
6. The average age for all 2010-2011 Tuition Grant recipients was **25.10 years**.
7. The 2010-2011 average private college tuition and fee charge was **\$19,382** per year, not including room, board, or books. The average South Carolina Tuition Grant award for 2010-2011 was **\$2,356** and covered **12.15%** of the average tuition and fees charge.

# **APPENDICES**

	<b><u>Page</u></b>
<b>Appendix A: Tuition Grants Awards for 2010-2011</b>	<b>9</b>
<b>Appendix B: Tuition Grants Recipients by County</b>	<b>10</b>
<b>Appendix C: Tuition Grants Recipients by Ethnic Group</b>	<b>11</b>
<b>Appendix D: Grants Awarded by Family Income Range</b>	<b>12</b>
<b>Appendix E: History – Awards, State Funds and Total Funds</b>	<b>13</b>
<b>Appendix F: History – Average Grants &amp; Average Tuition &amp; Fees</b>	<b>14</b>
<b>Appendix G: Analysis of Program Administrative Costs</b>	<b>15</b>
<b>Appendix H: Total Undergraduate Full-time Students</b>	<b>16</b>
<b>Appendix I: South Carolina Full-time Students</b>	<b>17</b>
<b>Appendix J: Fall Headcount Enrollments (Public &amp; Private)</b>	<b>18</b>
<b>Appendix K: Tuition Grants Commission: Organizational Chart</b>	<b>19</b>

# APPENDIX A

## SOUTH CAROLINA TUITION GRANTS COMMISSION

### 2010-2011 TUITION GRANTS

<u>College</u>	<u>Freshmen</u>		<u>Sophomores</u>		<u>Juniors</u>		<u>Seniors</u>		<u>Total</u>		<u>Average</u>
	<u>Number</u>	<u>Amount</u>	<u>Number</u>	<u>Amount</u>	<u>Number</u>	<u>Amount</u>	<u>Number</u>	<u>Amount</u>	<u>Number</u>	<u>Amount</u>	
Allen University	155	\$370,532	123	\$295,700	90	\$229,000	74	\$181,600	442	\$1,076,832	\$2,436
Anderson University	348	\$894,490	306	\$691,420	286	\$612,299	257	\$526,495	1,197	\$2,724,704	\$2,276
Benedict College	301	\$705,500	309	\$779,180	177	\$448,470	203	\$467,280	990	\$2,400,430	\$2,425
Bob Jones University	142	\$367,543	143	\$367,671	135	\$354,700	153	\$375,930	573	\$1,465,844	\$2,558
Charleston Southern	399	\$1,003,330	406	\$1,021,592	270	\$693,585	281	\$683,727	1,356	\$3,402,234	\$2,509
Claflin University	265	\$695,298	284	\$698,755	234	\$592,368	241	\$562,211	1,024	\$2,548,632	\$2,489
Coker College	142	\$356,935	254	\$527,000	190	\$392,829	171	\$317,414	757	\$1,594,178	\$2,106
Columbia College	161	\$413,510	127	\$316,129	150	\$372,900	137	\$311,290	575	\$1,413,829	\$2,459
Columbia International	54	\$144,400	45	\$114,727	53	\$139,694	44	\$104,900	196	\$503,721	\$2,570
Converse College	104	\$251,407	100	\$243,515	80	\$190,907	91	\$193,890	375	\$879,719	\$2,346
Erskine College	88	\$227,530	99	\$255,900	70	\$187,600	74	\$186,200	331	\$857,230	\$2,590
Furman University	130	\$342,310	126	\$327,435	148	\$388,010	123	\$325,100	527	\$1,382,855	\$2,624
Limestone College	129	\$276,442	288	\$385,496	272	\$323,980	269	\$286,484	958	\$1,272,402	\$1,328
Morris College	189	\$447,854	167	\$423,161	117	\$294,772	98	\$250,445	571	\$1,416,232	\$2,480
Newberry College	198	\$498,320	217	\$552,450	170	\$438,940	150	\$375,460	735	\$1,865,170	\$2,538
North Greenville	298	\$767,990	297	\$767,460	251	\$663,600	259	\$617,290	1,105	\$2,816,340	\$2,549
Presbyterian College	158	\$404,277	162	\$423,002	125	\$333,940	108	\$281,976	553	\$1,443,195	\$2,610
Southern Wesleyan	96	\$215,036	208	\$349,532	183	\$301,652	173	\$275,070	660	\$1,141,290	\$1,729
Spartanburg Methodist	384	\$929,386	213	\$527,045	6	\$10,600	0	\$0	603	\$1,467,031	\$2,433
Voorhees College	113	\$275,800	100	\$251,800	63	\$164,500	58	\$130,000	334	\$822,100	\$2,461
Wofford College	165	\$436,722	161	\$422,121	139	\$362,450	124	\$327,548	589	\$1,548,841	\$2,630
<b>TOTAL</b>	<b>4,019</b>	<b>\$10,024,612</b>	<b>4,135</b>	<b>\$9,741,091</b>	<b>3,209</b>	<b>\$7,496,796</b>	<b>3,088</b>	<b>\$6,780,310</b>	<b>14,451</b>	<b>\$34,042,809</b>	<b>\$2,356</b>

# APPENDIX B

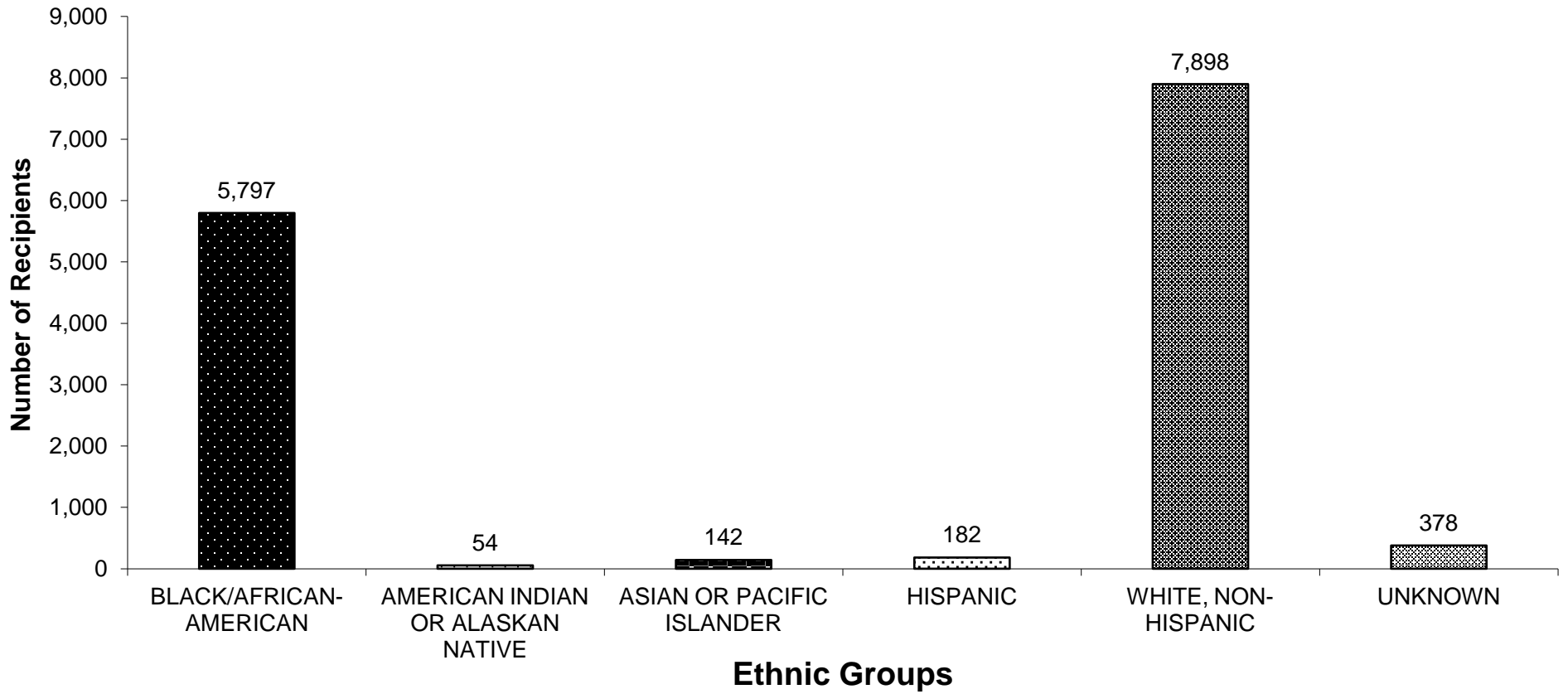
## SC TUITION GRANTS RECIPIENTS BY COUNTY

2010-2011

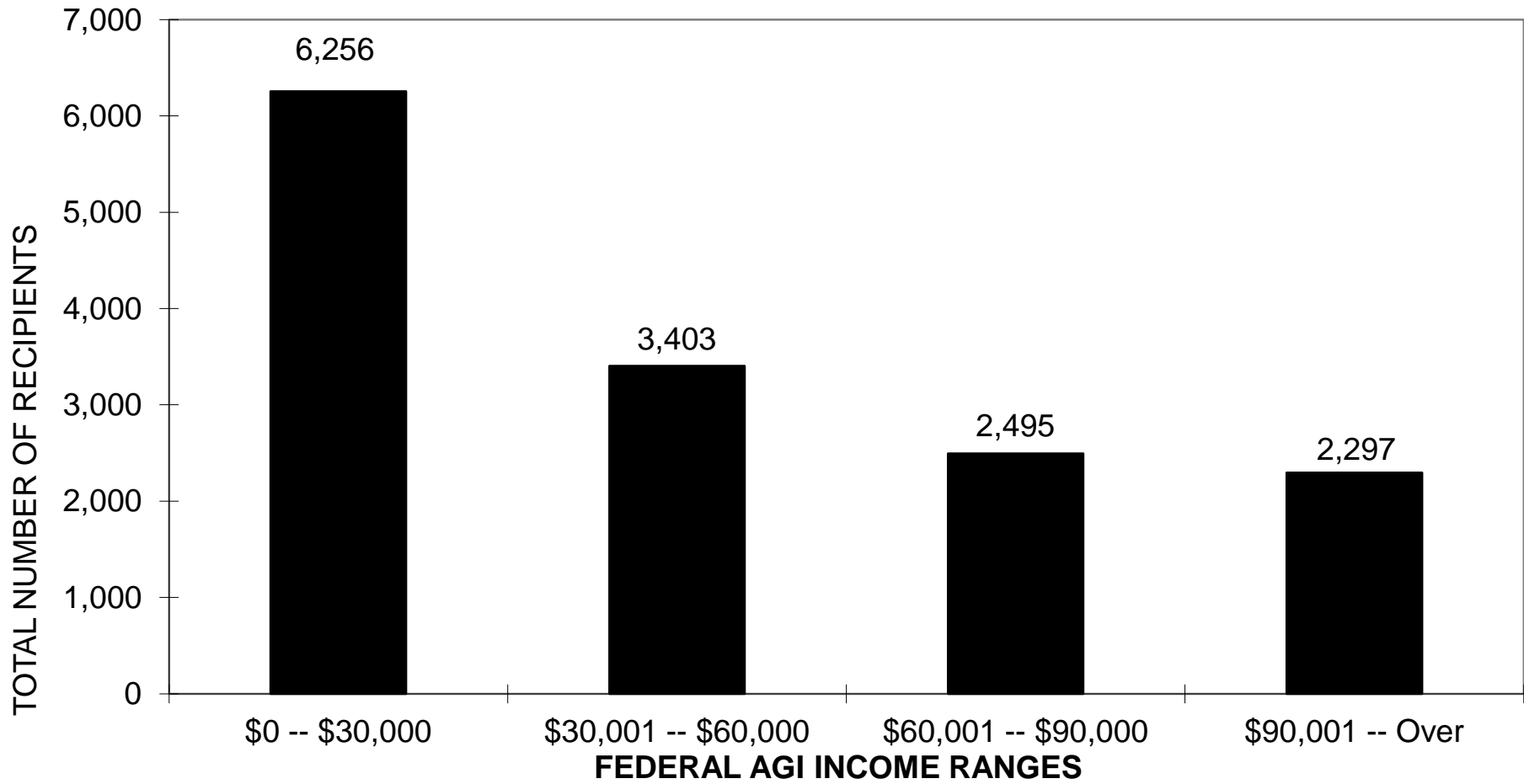
<u>COUNTY</u>	<u>RECIPIENTS</u>	<u>COUNTY</u>	<u>RECIPIENTS</u>
Abbeville	60	Greenwood	193
Aiken	295	Hampton	95
Allendale	32	Horry	262
Anderson	760	Jasper	56
Bamberg	65	Kershaw	209
Barnwell	59	Lancaster	114
Beaufort	169	Laurens	173
Berkeley	455	Lee	72
Calhoun	40	Lexington	779
Charleston	738	Marion	184
Cherokee	212	Marlboro	91
Chester	116	McCormick	19
Chesterfield	146	Newberry	183
Clarendon	162	Oconee	242
Colleton	95	Orangeburg	460
Darlington	358	Pickens	551
Dillon	125	Richland	1299
Dorchester	482	Saluda	41
Edgefield	45	Spartanburg	1178
Fairfield	77	Sumter	376
Florence	501	Union	82
Georgetown	179	Williamsburg	205
Greenville	1,960	York	456

# APPENDIX C

## SC TUITION GRANTS RECIPIENTS BY ETHNIC GROUP 2010-2011



**APPENDIX D**  
**SOUTH CAROLINA TUITION GRANTS BY INCOME**  
**2010-2011**



# APPENDIX E

## SOUTH CAROLINA TUITION GRANTS PROGRAM

### AWARDS, STATE FUND AND TOTAL FUNDS HISTORY

*(EXCLUDES PROGRAM ADMINISTRATIVE APPROPRIATIONS)*

<u>Year</u>	<u>State Appropriation</u>	<u>Total Funds</u>	<u>Number Of Grants</u>
1971-72	\$50,000	\$50,000	43
1972-73	\$150,000	\$150,000	134
1973-74	\$4,000,000	\$4,000,000	3,271
1974-75	\$6,180,000	\$6,398,882	5,186
1975-76	\$7,255,473	\$7,460,840	5,784
1976-77	\$7,332,686	\$7,833,229	7,516
1977-78	\$8,354,749	\$9,085,707	7,758
1978-79	\$9,356,497	\$10,133,140	9,335
1979-80	\$9,907,590	\$10,788,633	7,634
1980-81	\$10,834,659	\$11,700,785	8,479
1981-82	\$12,084,659	\$12,646,350	8,368
1982-83	\$12,184,659	\$12,375,722	7,974
1983-84	\$11,929,149	\$12,577,824	6,974
1984-85	\$12,929,149	\$13,749,800	7,412
1985-86	\$14,629,149	\$15,450,804	7,635
1986-87	\$15,592,839	\$16,379,163	7,795
1987-88	\$15,541,444	\$16,372,303	7,608
1988-89	\$16,189,154	\$17,825,811	7,934
1989-90	\$17,414,241	\$18,191,460	7,242
1990-91	\$17,414,241	\$18,054,069	6,816
1991-92	\$16,790,153	\$16,823,103	6,694
1992-93	\$16,004,273	\$16,583,714	6,606
1993-94	\$15,251,517	\$16,892,826	8,371
1994-95	\$16,346,136	\$17,358,968	8,428
1995-96	\$17,564,872	\$19,034,623	8,950
1996-97	\$20,783,666	\$21,727,055	9,321
1997-98	\$22,074,929	\$22,626,641	9,412
1998-99	\$22,307,633	\$22,582,693	9,800
1999-2000	\$23,115,329	\$23,391,633	9,908
2000-2001	\$24,479,575	\$24,937,077	10,152
2001-2002	\$22,376,550	\$22,971,182	10,864
2002-2003	\$25,650,042	\$26,487,728	11,586
2003-2004	\$25,202,599	\$25,922,255	12,004
2004-2005	\$27,391,853	\$28,277,793	12,025
2005-2006	\$27,572,932	\$28,438,045	11,869
2006-2007	\$31,457,949	\$32,160,551	11,735
2007-2008	\$37,748,012	\$38,451,537	12,461
2008-2009	\$36,698,209	\$37,389,468	12,801
2009-2010	\$34,531,073	\$35,235,299	14,200
2010-2011	\$33,993,261	\$34,827,306	14,451
<b>Totals</b>	<b>\$706,670,901</b>	<b>\$733,344,019</b>	<b>342,536</b>

# APPENDIX F

## SOUTH CAROLINA TUITION GRANTS PROGRAM

### AVERAGE GRANTS AND AVERAGE TUITION/FEE CHARGES

#### 1974-75 TO 2010-2011

<u>Year</u>	<u>Private Colleges Aver. Tuition/Fee Charges</u>	<u>Average SC Tuition Grant</u>	<u>% Tuition Covered By SCTG</u>	<u>Tuition Gap (Amount Not Covered)</u>
1974-75	\$1,555	\$ 1,233.00	79%	\$322
1975-76	\$1,714	\$ 1,287.00	75%	\$427
1976-77	\$1,901	\$ 1,102.00	58%	\$799
1977-78	\$2,087	\$ 1,148.00	55%	\$939
1978-79	\$2,285	\$ 1,314.00	58%	\$971
1979-80	\$2,486	\$ 1,433.00	58%	\$1,053
1980-81	\$2,765	\$ 1,280.00	46%	\$1,485
1981-82	\$3,089	\$ 1,577.00	51%	\$1,512
1982-83	\$3,403	\$ 1,665.00	49%	\$1,738
1983-84	\$3,691	\$ 1,803.00	49%	\$1,888
1984-85	\$4,099	\$ 1,852.00	45%	\$2,247
1985-86	\$4,464	\$ 1,984.00	44%	\$2,480
1986-87	\$4,706	\$ 2,097.00	45%	\$2,609
1987-88	\$5,161	\$ 2,149.00	42%	\$3,012
1988-89	\$5,607	\$ 2,240.00	40%	\$3,367
1989-90	\$6,160	\$ 2,506.00	41%	\$3,654
1990-91	\$6,583	\$ 2,626.00	40%	\$3,957
1991-92	\$7,058	\$ 2,510.00	36%	\$4,548
1992-93	\$7,406	\$ 2,529.00	34%	\$4,877
1993-94	\$7,972	\$ 2,005.00	25%	\$5,967
1994-95	\$8,440	\$ 1,982.00	24%	\$6,458
1995-96	\$8,935	\$ 2,075.00	23%	\$6,860
1996-97	\$9,467	\$ 2,309.00	24%	\$7,158
1997-98	\$9,967	\$ 2,329.00	23%	\$7,638
1998-99	\$10,561	\$ 2,329.00	22%	\$8,232
1999-2000	\$11,093	\$ 2,317.00	21%	\$8,776
2000-2001	\$11,682	\$ 2,482.00	21%	\$9,200
2001-2002	\$12,292	\$ 2,103.00	17%	\$10,189
2002-2003	\$13,022	\$ 2,255.00	17%	\$10,767
2003-2004	\$13,888	\$ 2,150.00	15%	\$11,738
2004-2005	\$14,698	\$ 2,281.00	15%	\$12,417
2005-2006	\$15,538	\$ 2,411.00	15%	\$13,127
2006-2007	\$16,611	\$ 2,648.00	16%	\$13,963
2007-2008	\$17,281	\$ 3,000.00	17%	\$14,281
2008-2009	\$18,244	\$ 3,006.00	16%	\$15,238
2009-2010	\$19,055	\$ 2,448.00	13%	\$16,607
2010-2011	\$19,391	\$ 2,356.00	12%	\$17,035

# APPENDIX G

## SOUTH CAROLINA TUITION GRANTS COMMISSION *Twenty Year Analysis of Administration Costs*

YEAR	TOTAL DOLLARS	TOTAL ADMIN DOLLARS EXPENDED	ADMIN DOLLARS AS % OF TOTAL DOLLARS	TOTAL APPS PROCESSED	ADMIN COST PER APP.	TOTAL AWARDS	ADMIN COST PER AWARD
2010-2011	\$34,827,306	\$312,785	0.89%	32,629	\$9.59	14,451	\$21.64
2009-2010	\$35,235,299	\$308,669	0.87%	31,023	\$9.95	14,200	\$21.74
2008-2009	\$37,700,369	\$318,897	0.85%	28,447	\$11.21	12,801	\$24.91
2007-2008	\$38,308,382	\$359,600	0.94%	27,206	\$13.22	12,461	\$28.86
2006-2007	\$32,778,861	\$347,621	1.06%	25,747	\$13.50	11,735	\$29.62
2005-2006	\$29,072,576	\$328,791	1.14%	26,097	\$12.60	11,869	\$27.70
2004-2005	\$28,859,988	\$320,583	1.11%	25,823	\$12.41	12,025	\$26.66
2003-2004	\$26,420,914	\$334,153	1.26%	25,419	\$13.15	12,004	\$27.84
2002-2003	\$26,944,463	\$318,359	1.18%	24,872	\$12.80	11,586	\$27.48
2001-2002	\$23,336,626	\$365,444	1.57%	23,122	\$15.81	10,870	\$33.62
2000-2001	\$25,295,026	\$357,949	1.42%	20,821	\$17.19	10,152	\$35.26
1999-2000	\$23,676,565	\$321,964	1.36%	20,185	\$15.95	9,908	\$32.50
1998-1999	\$22,898,136	\$315,443	1.38%	17,896	\$17.63	9,800	\$32.19
1997-1998	\$22,939,247	\$312,606	1.36%	17,354	\$18.01	9,412	\$33.21
1996-1997	\$21,559,158	\$274,658	1.27%	16,385	\$16.76	9,321	\$29.47
1995-1996	\$18,750,903	\$289,121	1.54%	15,671	\$18.45	8,950	\$32.30
1994-1995	\$17,573,050	\$290,817	1.65%	15,430	\$18.85	8,428	\$34.51
1993-1994	\$17,141,330	\$256,240	1.49%	12,852	\$19.94	8,371	\$30.61
1992-1993	\$16,819,992	\$244,014	1.45%	13,054	\$18.69	6,606	\$36.94
1991-1992	\$17,040,282	\$217,179	1.27%	11,118	\$19.53	6,694	\$32.44

# APPENDIX H

**TOTAL UNDERGRADUATE FULL-TIME STUDENTS  
AT THE TWENTY-ONE COLLEGES PARTICIPATING  
IN THE SC TUITION GRANTS PROGRAM  
(FALL OPENING ENROLLMENT FOR THE LAST TEN YEARS)**

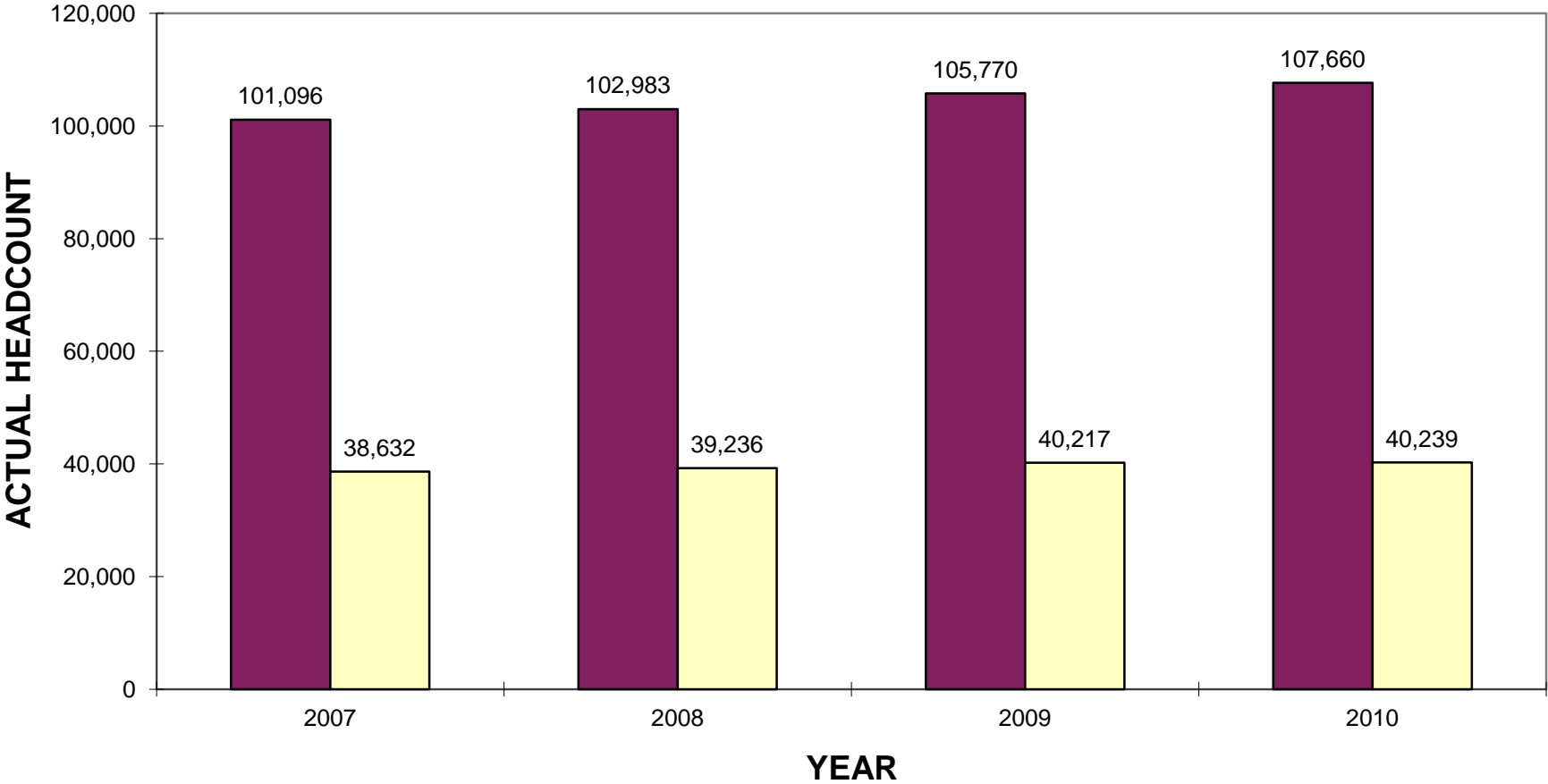
<u>COLLEGE</u>	<u>2001-02</u>	<u>2002-03</u>	<u>2003-04</u>	<u>2004-05</u>	<u>2005-06</u>	<u>2006-07</u>	<u>2007-08</u>	<u>2008-09</u>	<u>2009-10</u>	<u>2010-11</u>
Allen	511	573	544	647	617	517	640	703	804	819
Anderson	1119	1224	1250	1259	1233	1178	1405	1523	1689	1902
Benedict	2837	2866	2717	2676	2491	2467	2558	2831	2934	3088
Bob Jones							3664	3545	3195	3223
Charleston Southern	1946	2435	2075	1897	2213	2262	2395	2348	2377	2431
Claflin	1350	1464	1524	1662	1601	1600	1566	1606	1710	1754
Coker	873	915	918	930	904	980	1028	956	993	966
Columbia	1052	987	923	895	867	1121	984	961	964	924
Columbia International	551	573	564	539	496	430	429	440	504	514
Converse	631	567	595	623	622	639	631	617	594	559
Erskine	572	582	577	604	584	594	567	566	567	541
Furman	2640	2650	2855	2682	2707	2615	2350	2614	2588	2613
Limestone	1196	1433	1588	1750	1886	2150	2047	1814	2193	2133
Morris	953	1034	988	876	843	815	867	893	977	1071
Newberry	671	705	716	742	821	832	900	954	1083	1116
North Greenville	1255	1417	1483	1637	1634	1690	1784	1837	1895	1926
Presbyterian	1139	1152	1144	1144	1138	1162	1128	1124	1198	1133
Southern Wesleyan	1879	1896	1819	1923	1906	1724	1714	1604	1649	1440
Spartanburg Methodist	578	584	693	721	691	749	757	716	775	761
Voorhees	497	683	836	844	602	660	557	547	671	732
Wofford	<u>1097</u>	<u>1069</u>	<u>1145</u>	<u>1146</u>	<u>1158</u>	<u>1228</u>	<u>1306</u>	<u>1364</u>	<u>1415</u>	<u>1468</u>
<b>TOTAL STUDENTS</b>	<b>23347</b>	<b>24809</b>	<b>24954</b>	<b>25197</b>	<b>25014</b>	<b>25413</b>	<b>29277</b>	<b>29563</b>	<b>30775</b>	<b>31114</b>

# APPENDIX I

## SOUTH CAROLINA RESIDENT FULL-TIME STUDENTS AT THE TWENTY-ONE COLLEGES PARTICIPATING IN THE SC TUITION GRANTS PROGRAM (FALL OPENING ENROLLMENT FOR THE LAST TEN YEARS)

<u>COLLEGE</u>	<u>2001-02</u>	<u>2002-03</u>	<u>2003-04</u>	<u>2004-05</u>	<u>2005-06</u>	<u>2006-07</u>	<u>2007-08</u>	<u>2008-09</u>	<u>2009-10</u>	<u>2010-11</u>
Allen	217	286	468	322	387	394	494	555	615	617
Anderson	963	1108	1081	1090	1062	959	1187	1271	1413	1592
Benedict	2182	2184	2025	1886	1758	1618	1516	1545	1571	1660
Bob Jones							1040	1031	963	952
Charleston Southern	1538	1986	1688	1486	1725	1881	1925	1897	1923	2297
Clafin	1156	1244	1342	1418	1374	1384	1309	1300	1367	1390
Coker	773	805	818	819	771	856	896	841	861	961
Columbia	1001	924	870	829	793	812	883	863	866	1047
Columbia International	222	217	184	180	179	155	168	182	259	326
Converse	455	416	424	431	429	423	455	447	437	404
Erskine	448	441	427	403	371	402	413	418	421	410
Furman	818	807	814	786	796	775	707	802	826	957
Limestone	949	1161	1330	1444	1521	1774	1606	1445	1763	2743
Morris	813	1034	838	739	708	709	749	759	820	908
Newberry	574	606	598	599	637	638	703	756	877	936
North Greenville	1026	1112	1145	1275	1251	1311	1335	1164	951	1649
Presbyterian	660	686	680	667	693	721	718	719	765	732
Southern Wesleyan	1611	1629	1506	1578	1582	1437	1405	1292	1358	1175
Spartanburg	508	526	631	656	637	695	705	655	725	757
Voorhees	285	453	614	632	416	448	382	402	474	514
Wofford	<u>735</u>	<u>698</u>	<u>755</u>	<u>740</u>	<u>741</u>	<u>764</u>	<u>786</u>	<u>805</u>	<u>859</u>	<u>884</u>
<b>TOTAL STUDENTS</b>	<b>16934</b>	<b>18323</b>	<b>18238</b>	<b>17980</b>	<b>17831</b>	<b>18156</b>	<b>19382</b>	<b>19149</b>	<b>20114</b>	<b>22911</b>

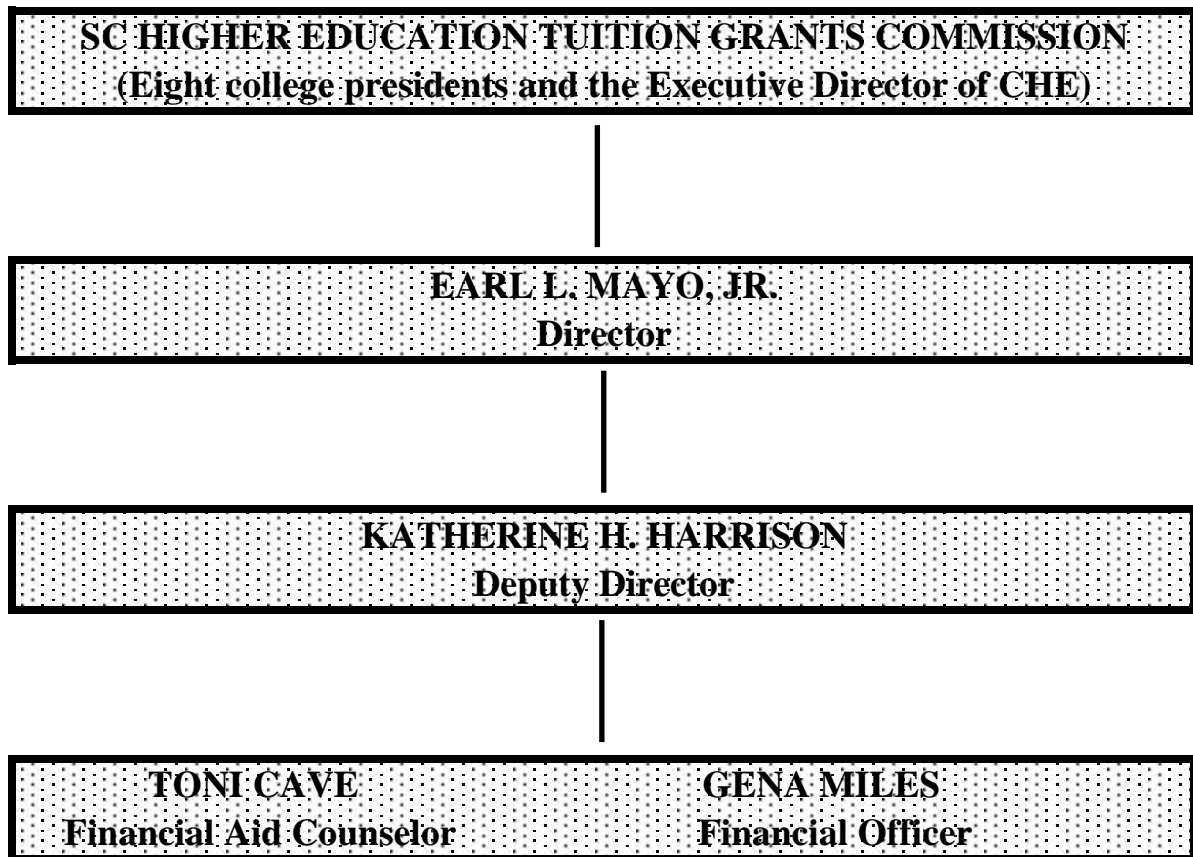
**APPENDIX J**  
**COLLEGE FALL HEADCOUNT ENROLLMENTS**  
**PUBLIC SENIOR VS. PRIVATE SENIOR INSTITUTIONS**



# APPENDIX K

## SOUTH CAROLINA HIGHER EDUCATION TUITION GRANTS COMMISSION

### ORGANIZATIONAL CHART



<b>Total Number of Documents Printed:</b>	<b>225</b>
<b>Cost Per Unit:</b>	<b>\$2.40</b>
<b>Total Printing Cost - SC Higher</b>	
<b>Education Tuition Grants Commission:</b>	<b>\$540.00</b>