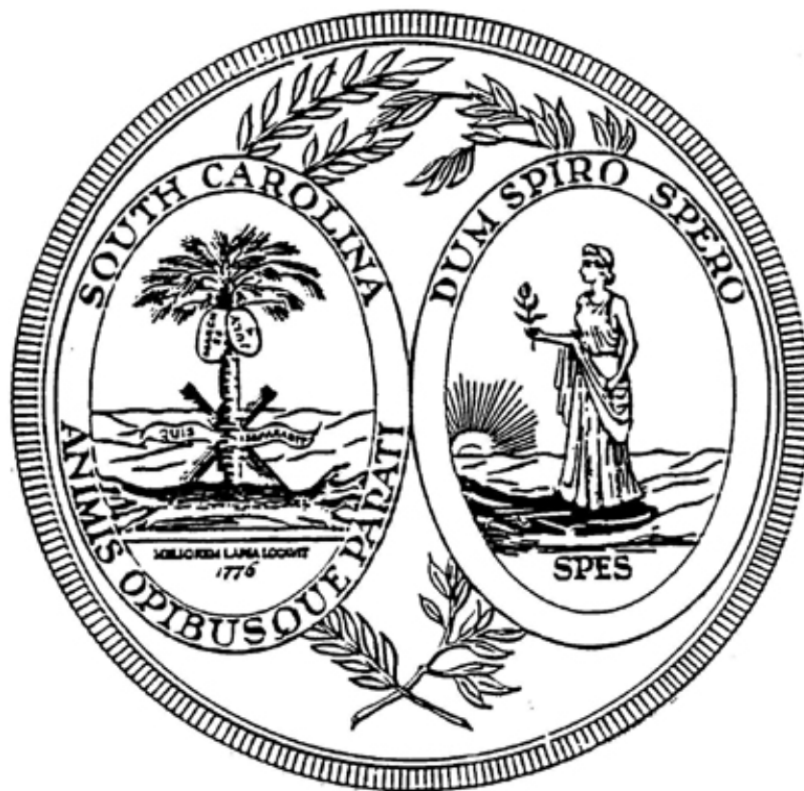


**SOUTH CAROLINA  
HIGHER EDUCATION  
TUITION GRANTS COMMISSION**



**ANNUAL REPORT  
2008-2009**

**SOUTH CAROLINA HIGHER EDUCATION  
TUITION GRANTS COMMISSION**

TO: His Excellency, Governor Marshall Clement Sanford,  
Chairman, State Budget and Control Board, and the  
Members of the South Carolina General Assembly

The South Carolina Higher Education Tuition Grants Commission respectfully submits for consideration its annual report. Included in this report is general data concerning the program and specific data covering the 2008-2009 award year.

Respectfully Yours,

Dr. James Epting  
Chairman  
South Carolina Higher Education  
Tuition Grants Commission

# TABLE OF CONTENTS

	<u>Page</u>
South Carolina Tuition Grants - Philosophy and Purpose.....	3
Commission Members and Staff.....	4
Statutory Authority for the Commission.....	5
History of the Commission.....	5
Program Administered by the Commission.....	5
Public Service Activities and Resources.....	6
2008-2009 Statistical Summary.....	7

## **APPENDICES:**

Appendix A:	Tuition Grants Awards for 2008-2009	9
Appendix B:	Tuition Grants Recipients by County	10
Appendix C:	Tuition Grants Recipients by Ethnic Group	11
Appendix D:	Grants Awarded by Family Income Range	12
Appendix E:	History – Awards, State Funds and Total Funds	13
Appendix F:	History – Average Grants and Average Tuition & Fees	14
Appendix G:	Analysis of Program Administrative Costs	15
Appendix H:	Total Undergraduate Full-time Students	16
Appendix I:	South Carolina Full-time Students	17
Appendix J:	College Fall Headcount Enrollments (Public & Private)	18
Appendix K:	SC Tuition Grants Commission: Organizational Chart	19

## **SC HIGHER EDUCATION TUITION GRANTS PHILOSOPHY AND PURPOSE**

“Whereas, the General Assembly finds that as a result of the rising school population and the continuously rising cost of providing proper facilities for the higher education of young people, there exists in this State an urgent need to use all available educational resources wisely. A lack of higher education facilities is inimical to the welfare and prosperity of all residents of the State and to the continued financial growth of the State;

Whereas, the General Assembly also finds that within the State there exists several accredited independent institutions of higher learning whose facilities could be used effectively in the public interest by providing additional space for students thereby eliminating the need for substantial increases in capital outlay funds; and

Whereas, it is vital to the growth of the State that all qualified residents be offered the opportunity for furthering their education.

To achieve this in the most economical manner, students willing to bear the major cost of their education expenses should be assisted where financial need exists in an effort to make their educational goals more readily attainable.”

-- The Preamble to the Tuition Grants Law

**SOUTH CAROLINA HIGHER EDUCATION  
TUITION GRANTS COMMISSION  
2008-2009**

**COMMISSION MEMBERS**

Dr. James Epting  
Chairman  
North Greenville University  
Tigerville, SC

Dr. David Spittal  
Southern Wesleyan University  
Central, SC

Dr. Mitchell Zais  
Vice Chairman  
Newberry College  
Newberry, SC

Dr. Charles Young  
Allen University  
Columbia, SC

Dr. John Griffith  
Secretary  
Presbyterian College  
Clinton, SC

Dr. Benjamin Dunlap  
Wofford College  
Spartanburg, SC

Dr. Caroline Whitson  
Columbia College  
Columbia, SC

Dr. Garrison Walters  
Commission on Higher Education  
Columbia, SC

Dr. David Shi  
Furman University  
Greenville, SC

**STAFF MEMBERS**

Mr. Earl L. Mayo, Jr. ....Director

Mrs. Katherine H. Harrison.....Deputy Director

Mrs. Toni Cave.....Financial Aid Counselor

Ms. Gena Miles.....Financial Officer

## **STATUTORY AUTHORITY FOR THE COMMISSION**

The General Assembly of the State of South Carolina, during the 1970 session, passed Act 1191 creating the Higher Education Tuition Grants Commission. This Commission was created as a State agency charged with the responsibility for overseeing the operation of the Tuition Grants Program.

## **HISTORY OF THE COMMISSION**

In 1970, the General Assembly passed a bill that created the Higher Education Tuition Grants Commission, an agency that was charged with the responsibility of administering tuition grants to independent college students. The Governor signed the bill on May 1, 1970. The original appropriation was \$5,000. No awards were made the first year. In 1971-72, the program aided 43 students. In 1972-73, a total of 134 students received awards.

The Tuition Grants Program has assisted many needy students since its inception in 1970. Since the beginning of the program, over 313,000 awards have been made.

## **PROGRAM ADMINISTERED BY THE COMMISSION**

The South Carolina Higher Education Tuition Grants Commission has been charged by the General Assembly with the responsibility of administering the Tuition Grants Program. This program allows South Carolina residents who attend participating independent colleges in this state to receive financial assistance from the state if they meet the eligibility requirements of the program.

All grant recipients must be full-time students, of good moral character, must demonstrate financial need, and must meet specified standards of academic merit.

Eligible students may apply their grants only toward tuition and fees at a South Carolina independent college that is non-profit and accredited by the Southern Association of Colleges and Secondary Schools or an independent bachelor's level institution chartered before 1962 whose major campus and headquarters are located within South Carolina. The amount of the grant may not exceed the student's financial need or the total of tuition and fees charged by the college. Also, the amount may not exceed the average annual state subsidy for the students who attend the four-year public colleges in the state.

In September and October of each year, the Tuition Grants Commission distributes information brochures to all South Carolina secondary schools and to eligible colleges. The guidance offices at the secondary schools and the financial aid offices at the colleges distribute these materials to students throughout the state.

## **2008-2009 ACADEMIC YEAR**

The Commission received 28,447 complete applications for grants for the 2008-2009 award year.

The Tuition Grants Program has opened the door of educational opportunity to thousands of South Carolinians. A survey of grant recipients has indicated that, if they had not received tuition grant assistance, many of them would not have gone to college or would have enrolled in one of South Carolina's public colleges at a greater cost to the State.

## **PUBLIC SERVICE ACTIVITIES**

During the 2008-2009 year, Commission staff members participated in six professional programs for parents and students. These financial aid information sessions were conducted throughout the State and were attended by nearly 750 participants. Additionally, during September, the staff participated in five statewide conferences held for high school guidance counselors. A total of 540 high school guidance counselors and college admissions officers attended these meetings. During October, the Commission conducted its annual training session for financial aid administrators with over 40 in attendance. The staff also conducted two on-site training workshops for colleges. The executive staff presented Program information at two Board meetings of the South Carolina Independent Colleges and Universities, and at two state-wide conferences of the South Carolina Association of Student Financial Aid Administrators.

On January 25, 2009, the Commission's Executive Director participated in a statewide South Carolina Educational Television (SCETV) broadcast. The January broadcast was the annual SCETV program titled *Finding Money for College*. This two-hour SCETV broadcast was a live interactive telecast focusing on financial aid for postsecondary education.

The Commission's web site ([www.sctuitiongrants.com](http://www.sctuitiongrants.com)) provides students, parents, and the general public important program information, links to South Carolina's independent colleges, links to federal financial aid information, and links to necessary program documents for students and parents. Additionally, the Commission's web site provides a separate section for college financial aid offices for expediting the processing of program reports. Colleges download information securely via the Internet instead of depending upon hard-copy reports or diskettes to arrive in the mail. This provides the Commission the ability to quickly disburse grant dollars to students.

## **RESOURCES**

The State Appropriation for Tuition Grants in 2008-2009.....	<b>\$21,755,075</b>
State Lottery Funds.....	<b>\$7,766,604</b>
Unclaimed Prizes Lottery Funds Expended in 2008-2009.....	<b>\$1,948,520</b>
Childrens' Education Endowment Funds.....	<b>\$5,174,919</b>
Interest from Undisbursed Funds.....	<b>\$45,095</b>
Matching Funds through the Federal LEAP Program.....	<b>\$325,268</b>
Matching Funds through the Federal SLEAP Program.....	<b><u>\$365,991</u></b>

Total Grants Program Funding..... **\$37,381,472**

\*\*Total Administrative Costs for 2008-2009..... **\$318,897**

\*\* **Total administrative costs were only 0.85% of the total agency appropriation.**

## **2008-2009 STATISTICAL SUMMARY**

1. Students at twenty-one (**21**) independent colleges in South Carolina were eligible to participate in the Tuition Grants Program during 2008-2009. These colleges enrolled a total of **29,948** full-time undergraduate students. Nearly sixty-four percent (**19,149**) were South Carolina residents.
2. Almost twenty-four percent (**23.6%**) of the 2008-2009 total award dollars went to South Carolina residents attending the five historically black colleges that participate in the program.
3. In 2008-2009, almost forty-one percent (**40.6%**) of South Carolina Tuition Grants recipients were African-Americans. As a percentage of recipients, the South Carolina Tuition Grants Program serves more African-American students than any other state-funded program.
4. Over seventy-eight percent (**78.6%**) of SCTG recipients were dependent upon their parents/guardians for financial support. Almost twenty-two percent (**21.4%**) were totally independent and relied only on their own income or that of a spouse.
5. Over sixty-six percent (**66.4%**) of the 2008-2009 SCTG recipients had family incomes of **\$59,999 or less**. The average income for all 2008-2009 Tuition Grant recipients was \$48,039.
6. The average age for all 2008-2009 Tuition Grant recipients was **22.91 years**.
7. The 2008-2009 average private college tuition and fees charge was **\$18,244** per year, not including room, board or books. The average South Carolina Tuition Grant award for 2008-2009 was **\$3,006** or about sixteen percent (**16.48%**) of the average tuition and fees charge.

# **APPENDICES**

	<b><u>Page</u></b>
<b>Appendix A: Tuition Grants Awards For 2008-2009</b>	<b>9</b>
<b>Appendix B: Tuition Grants Recipients by County</b>	<b>10</b>
<b>Appendix C: Tuition Grants Recipients by Ethnic Group</b>	<b>11</b>
<b>Appendix D: Grants Awarded by Family Income Range</b>	<b>12</b>
<b>Appendix E: History – Awards, State Funds and Total Funds</b>	<b>13</b>
<b>Appendix F: History – Average Grants &amp; Average Tuition &amp; Fees</b>	<b>14</b>
<b>Appendix G: Analysis of Program Administrative Costs</b>	<b>15</b>
<b>Appendix H: Total Undergraduate Full-time Students</b>	<b>16</b>
<b>Appendix I: South Carolina Full-time Students</b>	<b>17</b>
<b>Appendix J: Fall Headcount Enrollments (Public &amp; Private)</b>	<b>18</b>
<b>Appendix K: Tuition Grants Commission: Organizational Chart</b>	<b>19</b>

# APPENDIX A

## SOUTH CAROLINA TUITION GRANTS COMMISSION

### 2008-2009 TUITION GRANTS

<u>College</u>	<u>Freshmen</u>		<u>Sophomores</u>		<u>Juniors</u>		<u>Seniors</u>		<u>Total</u>		<u>Average</u>
	<u>Number</u>	<u>Amount</u>	<u>Number</u>	<u>Amount</u>	<u>Number</u>	<u>Amount</u>	<u>Number</u>	<u>Amount</u>	<u>Number</u>	<u>Amount</u>	
Allen University	149	\$475,755	69	\$233,125	28	\$89,275	35	\$113,475	281	\$911,630	\$3,244
Anderson University	260	\$787,475	216	\$649,980	188	\$567,811	235	\$646,800	899	\$2,652,066	\$2,950
Benedict College	271	\$866,589	225	\$722,235	172	\$552,240	239	\$723,620	907	\$2,864,684	\$3,158
Bob Jones University	132	\$429,380	165	\$535,478	127	\$411,075	127	\$392,150	551	\$1,768,083	\$3,209
Charleston Southern	367	\$1,184,770	317	\$1,039,020	233	\$775,605	324	\$1,032,080	1,241	\$4,031,475	\$3,249
Claflin University	290	\$967,455	216	\$685,774	218	\$675,610	235	\$714,828	959	\$3,043,667	\$3,174
Coker College	127	\$380,119	194	\$515,846	188	\$502,795	218	\$500,039	727	\$1,898,799	\$2,612
Columbia College	202	\$655,520	136	\$443,172	147	\$478,815	124	\$356,965	609	\$1,934,472	\$3,176
Columbia International	36	\$117,905	56	\$185,400	38	\$126,770	27	\$79,678	157	\$509,750	\$3,247
Converse College	86	\$280,368	81	\$257,817	73	\$224,605	93	\$242,352	333	\$1,005,142	\$3,018
Erskine College	102	\$324,855	83	\$280,090	93	\$311,305	65	\$216,520	343	\$1,132,770	\$3,303
Furman University	150	\$505,825	133	\$441,425	98	\$323,229	120	\$377,574	501	\$1,648,053	\$3,290
Limestone College	106	\$289,649	159	\$302,246	205	\$337,001	308	\$436,284	778	\$1,365,180	\$1,755
Morris College	150	\$461,907	138	\$431,354	115	\$361,771	115	\$359,130	518	\$1,614,162	\$3,116
Newberry College	206	\$346,575	184	\$599,111	110	\$357,141	127	\$397,808	627	\$2,000,635	\$3,191
North Greenville	306	\$991,123	244	\$797,156	261	\$854,866	203	\$641,304	1,014	\$3,284,449	\$3,239
Presbyterian College	145	\$473,777	109	\$368,255	115	\$389,700	98	\$319,650	467	\$1,551,382	\$3,322
Southern Wesleyan	107	\$291,442	194	\$375,714	165	\$355,286	254	\$453,720	720	\$1,476,162	\$2,050
Spartanburg Methodist	293	\$927,759	169	\$529,838	17	\$42,225	2	\$6,850	481	\$1,506,672	\$3,132
Voorhees College	76	\$244,075	54	\$178,550	31	\$104,575	45	\$140,199	206	\$667,399	\$3,240
Wofford College	140	\$472,800	128	\$430,510	123	\$404,563	91	\$304,994	482	\$1,612,867	\$3,346
<b>TOTAL</b>	<b>3,701</b>	<b>\$11,775,123</b>	<b>3,270</b>	<b>\$10,002,096</b>	<b>2,745</b>	<b>\$8,246,263</b>	<b>3,085</b>	<b>\$8,456,017</b>	<b>12,801</b>	<b>\$38,479,499</b>	<b>\$3,006</b>

# APPENDIX B

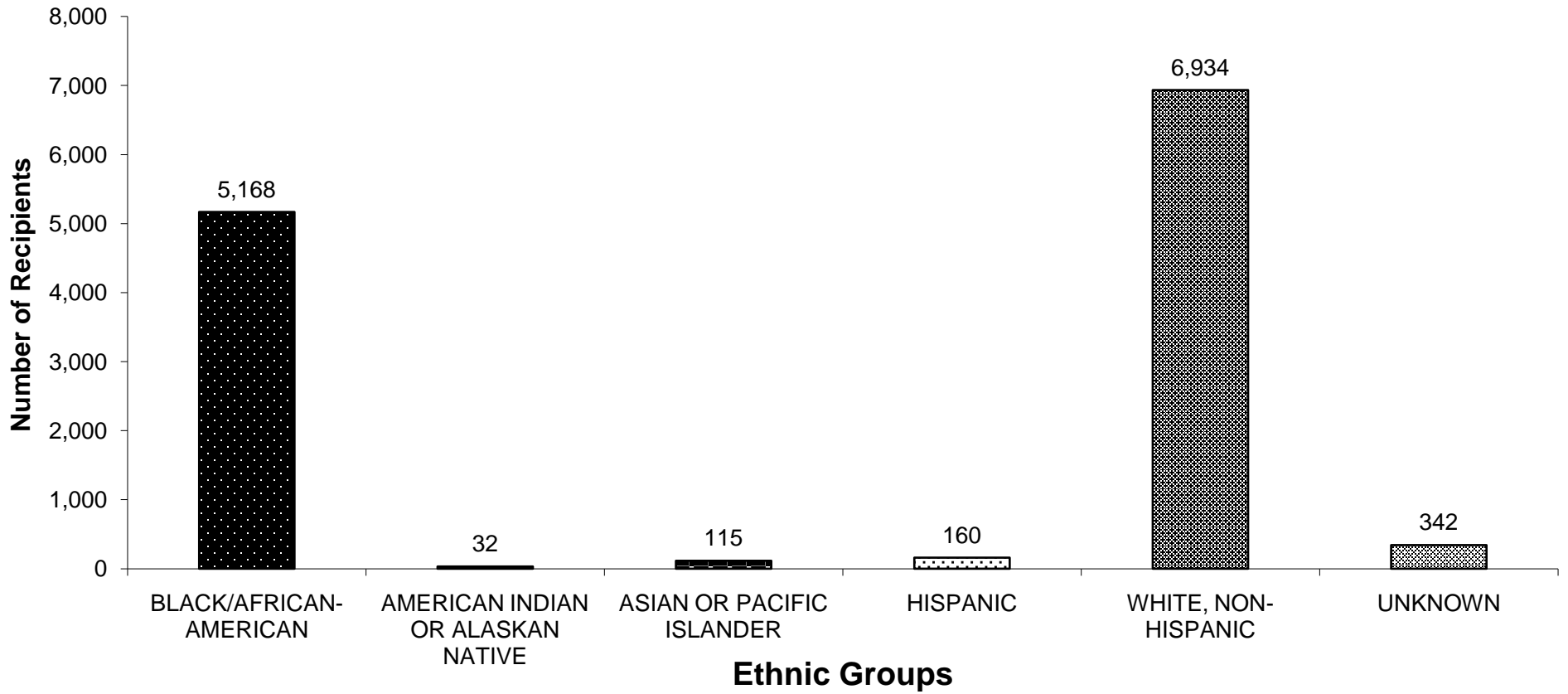
## SC TUITION GRANTS RECIPIENTS BY COUNTY

2008-2009

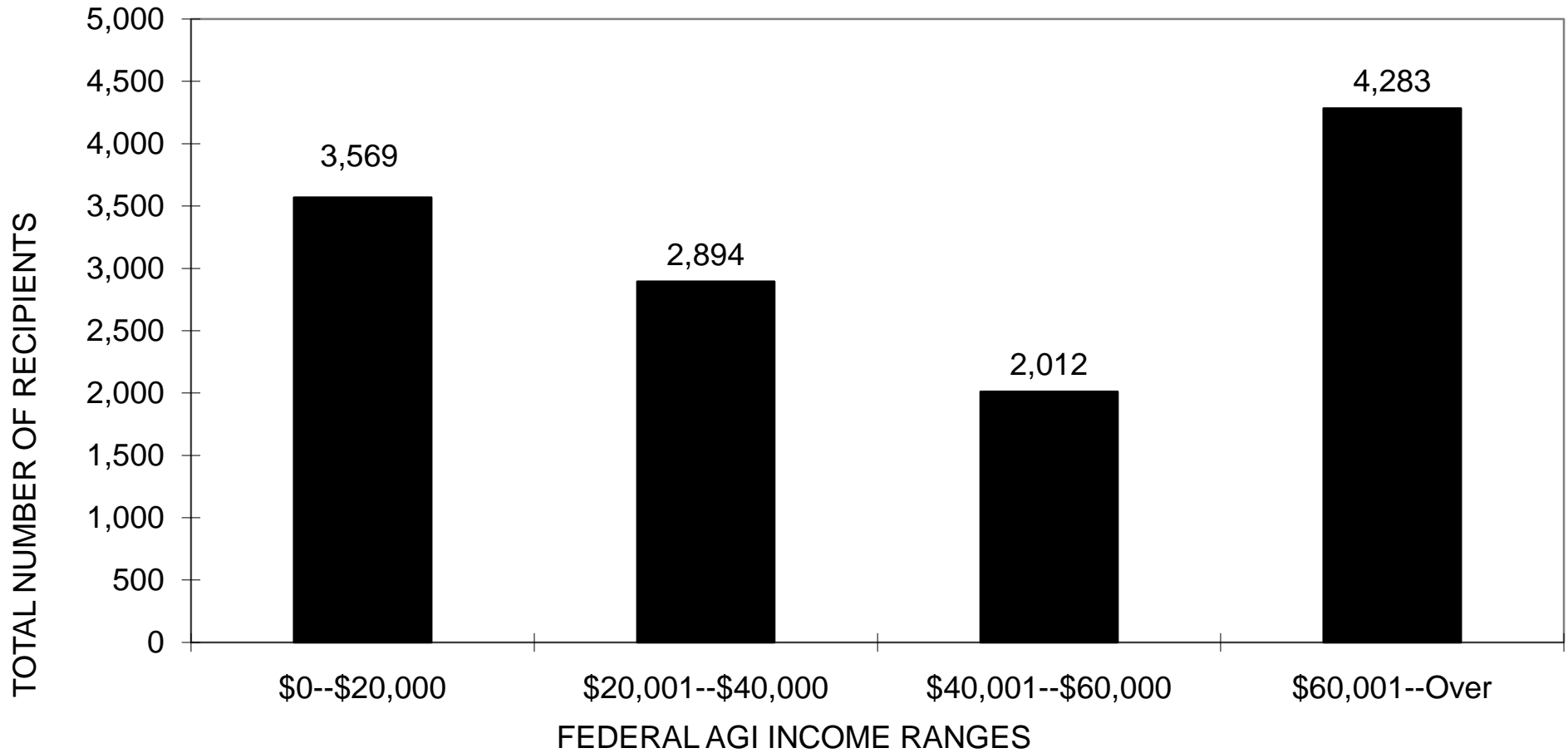
<u>COUNTY</u>	<u>RECIPIENTS</u>	<u>COUNTY</u>	<u>RECIPIENTS</u>
Abbeville	90	Greenwood	124
Aiken	279	Hampton	81
Allendale	30	Horry	194
Anderson	740	Jasper	41
Bamberg	67	Kershaw	175
Barnwell	60	Lancaster	43
Beaufort	172	Laurens	167
Berkeley	711	Lee	54
Calhoun	49	Lexington	802
Charleston	525	Marion	202
Cherokee	267	Marlboro	122
Chester	199	McCormick	14
Chesterfield	87	Newberry	126
Clarendon	107	Oconee	225
Colleton	80	Orangeburg	390
Darlington	323	Pickens	506
Dillon	109	Richland	897
Dorchester	350	Saluda	28
Edgefield	39	Spartanburg	881
Fairfield	264	Sumter	319
Florence	443	Union	107
Georgetown	130	Williamsburg	226
Greenville	1,636	York	275

# APPENDIX C

## SC TUITION GRANTS RECIPIENTS BY ETHNIC GROUP 2008-2009



**APPENDIX D**  
**SOUTH CAROLINA TUITION GRANTS BY INCOME**  
**2008-2009**



# APPENDIX E

## SOUTH CAROLINA TUITION GRANTS PROGRAM

### AWARDS, STATE FUND AND TOTAL FUNDS HISTORY

(EXCLUDES PROGRAM ADMINISTRATIVE APPROPRIATIONS)

<u>Year</u>	<u>State Appropriation</u>	<u>Total Funds</u>	<u>Number Of Grants</u>
1971-72	\$50,000	\$50,000	43
1972-73	\$150,000	\$150,000	134
1973-74	\$4,000,000	\$4,000,000	3,271
1974-75	\$6,180,000	\$6,398,882	5,186
1975-76	\$7,255,473	\$7,460,840	5,784
1976-77	\$7,332,686	\$7,833,229	7,516
1977-78	\$8,354,749	\$9,085,707	7,758
1978-79	\$9,356,497	\$10,133,140	9,335
1979-80	\$9,907,590	\$10,788,633	7,634
1980-81	\$10,834,659	\$11,700,785	8,479
1981-82	\$12,084,659	\$12,646,350	8,368
1982-83	\$12,184,659	\$12,375,722	7,974
1983-84	\$11,929,149	\$12,577,824	6,974
1984-85	\$12,929,149	\$13,749,800	7,412
1985-86	\$14,629,149	\$15,450,804	7,635
1986-87	\$15,592,839	\$16,379,163	7,795
1987-88	\$15,541,444	\$16,372,303	7,608
1988-89	\$16,189,154	\$17,825,811	7,934
1989-90	\$17,414,241	\$18,191,460	7,242
1990-91	\$17,414,241	\$18,054,069	6,816
1991-92	\$16,790,153	\$16,823,103	6,694
1992-93	\$16,004,273	\$16,583,714	6,606
1993-94	\$15,251,517	\$16,892,826	8,371
1994-95	\$16,346,136	\$17,358,968	8,428
1995-96	\$17,564,872	\$19,034,623	8,950
1996-97	\$20,783,666	\$21,727,055	9,321
1997-98	\$22,074,929	\$22,626,641	9,412
1998-99	\$22,307,633	\$22,582,693	9,800
1999-2000	\$23,115,329	\$23,391,633	9,908
2000-2001	\$24,479,575	\$24,937,077	10,152
2001-2002	\$22,376,550	\$22,971,182	10,870
2002-2003	\$25,650,042	\$26,487,728	11,586
2003-2004	\$25,202,599	\$25,922,255	12,004
2004-2005	\$27,391,853	\$28,277,793	12,025
2005-2006	\$27,572,932	\$28,438,045	11,869
2006-2007	\$36,424,882	\$37,127,484	11,735
2007-2008	\$33,973,240	\$34,676,765	12,461
2008-2009	<b>\$36,690,213</b>	<b>\$37,381,472</b>	<b>12,801</b>
<b>Totals</b>	<b>\$639,280,732</b>	<b>\$664,415,579</b>	<b>313,848</b>

# APPENDIX F

## SOUTH CAROLINA TUITION GRANTS PROGRAM

### AVERAGE GRANTS AND AVERAGE TUITION/FEE CHARGES

#### 1974-75 TO 2008-2009

<u>Year</u>	<u>Private Colleges Aver. Tuition/Fee Charges</u>	<u>Average SC Tuition Grant</u>	<u>% Tuition Covered By SCTG</u>	<u>Tuition Gap (Amount Not Covered)</u>
1974-75	\$1,555	\$ 1,233.00	79%	\$322
1975-76	\$1,714	\$ 1,287.00	75%	\$427
1976-77	\$1,901	\$ 1,102.00	58%	\$799
1977-78	\$2,087	\$ 1,148.00	55%	\$939
1978-79	\$2,285	\$ 1,314.00	58%	\$971
1979-80	\$2,486	\$ 1,433.00	58%	\$1,053
1980-81	\$2,765	\$ 1,280.00	46%	\$1,485
1981-82	\$3,089	\$ 1,577.00	51%	\$1,512
1982-83	\$3,403	\$ 1,665.00	49%	\$1,738
1983-84	\$3,691	\$ 1,803.00	49%	\$1,888
1984-85	\$4,099	\$ 1,852.00	45%	\$2,247
1985-86	\$4,464	\$ 1,984.00	44%	\$2,480
1986-87	\$4,706	\$ 2,097.00	45%	\$2,609
1987-88	\$5,161	\$ 2,149.00	42%	\$3,012
1988-89	\$5,607	\$ 2,240.00	40%	\$3,367
1989-90	\$6,160	\$ 2,506.00	41%	\$3,654
1990-91	\$6,583	\$ 2,626.00	40%	\$3,957
1991-92	\$7,058	\$ 2,510.00	36%	\$4,548
1992-93	\$7,406	\$ 2,529.00	34%	\$4,877
1993-94	\$7,972	\$ 2,005.00	25%	\$5,967
1994-95	\$8,440	\$ 1,982.00	24%	\$6,458
1995-96	\$8,935	\$ 2,075.00	23%	\$6,860
1996-97	\$9,467	\$ 2,309.00	24%	\$7,158
1997-98	\$9,967	\$ 2,329.00	23%	\$7,638
1998-99	\$10,561	\$ 2,329.00	22%	\$8,232
1999-2000	\$11,093	\$ 2,317.00	21%	\$8,776
2000-2001	\$11,682	\$ 2,482.00	21%	\$9,200
2001-2002	\$12,292	\$ 2,103.00	17%	\$10,189
2002-2003	\$13,022	\$ 2,255.00	17%	\$10,767
2003-2004	\$13,888	\$ 2,150.00	15%	\$11,738
2004-2005	\$14,698	\$ 2,281.00	15%	\$12,417
2005-2006	\$15,538	\$ 2,411.00	15%	\$13,127
2006-2007	\$16,611	\$ 2,648.00	16%	\$13,963
2007-2008	\$17,281	\$ 3,000.00	17%	\$14,281
2008-2009	\$18,244	\$ 3,006.00	16%	\$15,238

## APPENDIX G

### SOUTH CAROLINA TUITION GRANTS COMMISSION

#### *Twenty Year Analysis of Administration Costs*

YEAR	TOTAL DOLLARS	TOTAL ADMIN DOLLARS EXPENDED	ADMIN DOLLARS AS % OF TOTAL DOLLARS	TOTAL APPS PROCESSED	ADMIN COST PER APP.	TOTAL AWARDS	ADMIN COST PER AWARD
2008-2009	\$37,700,369	\$318,897	0.85%	28,447	\$11.21	12,801	\$24.91
2007-2008	\$38,308,382	\$359,600	0.94%	27,206	\$13.22	12,461	\$28.86
2006-2007	\$32,778,861	\$347,621	1.06%	25,747	\$13.50	11,735	\$29.62
2005-2006	\$29,072,576	\$328,791	1.14%	26,097	\$12.60	11,869	\$27.70
2004-2005	\$28,859,988	\$320,583	1.11%	25,823	\$12.41	12,025	\$26.66
2003-2004	\$26,420,914	\$334,153	1.26%	25,419	\$13.15	12,004	\$27.84
2002-2003	\$26,944,463	\$318,359	1.18%	24,872	\$12.80	11,586	\$27.48
2001-2002	\$23,336,626	\$365,444	1.57%	23,122	\$15.81	10,870	\$33.62
2000-2001	\$25,295,026	\$357,949	1.42%	20,821	\$17.19	10,152	\$35.26
1999-2000	\$23,676,565	\$321,964	1.36%	20,185	\$15.95	9,908	\$32.50
1998-1999	\$22,898,136	\$315,443	1.38%	17,896	\$17.63	9,800	\$32.19
1997-1998	\$22,939,247	\$312,606	1.36%	17,354	\$18.01	9,412	\$33.21
1996-1997	\$21,559,158	\$274,658	1.27%	16,385	\$16.76	9,321	\$29.47
1995-1996	\$18,750,903	\$289,121	1.54%	15,671	\$18.45	8,950	\$32.30
1994-1995	\$17,573,050	\$290,817	1.65%	15,430	\$18.85	8,428	\$34.51
1993-1994	\$17,141,330	\$256,240	1.49%	12,852	\$19.94	8,371	\$30.61
1992-1993	\$16,819,992	\$244,014	1.45%	13,054	\$18.69	6,606	\$36.94
1991-1992	\$17,040,282	\$217,179	1.27%	11,118	\$19.53	6,694	\$32.44
1990-1991	\$18,280,311	\$226,242	1.24%	11,075	\$20.43	6,816	\$33.19
1989-1990	\$18,403,077	\$211,617	1.15%	11,189	\$18.91	7,242	\$29.22
1988-1989	\$18,067,274	\$241,463	1.34%	11,451	\$21.09	7,934	\$30.43

# APPENDIX H

**TOTAL UNDERGRADUATE FULL-TIME STUDENTS AT THE TWENTY-ONE  
COLLEGES PARTICIPATING IN THE SC TUITION GRANTS PROGRAM  
(FALL OPENING ENROLLMENTS FOR THE LAST TEN YEARS)**

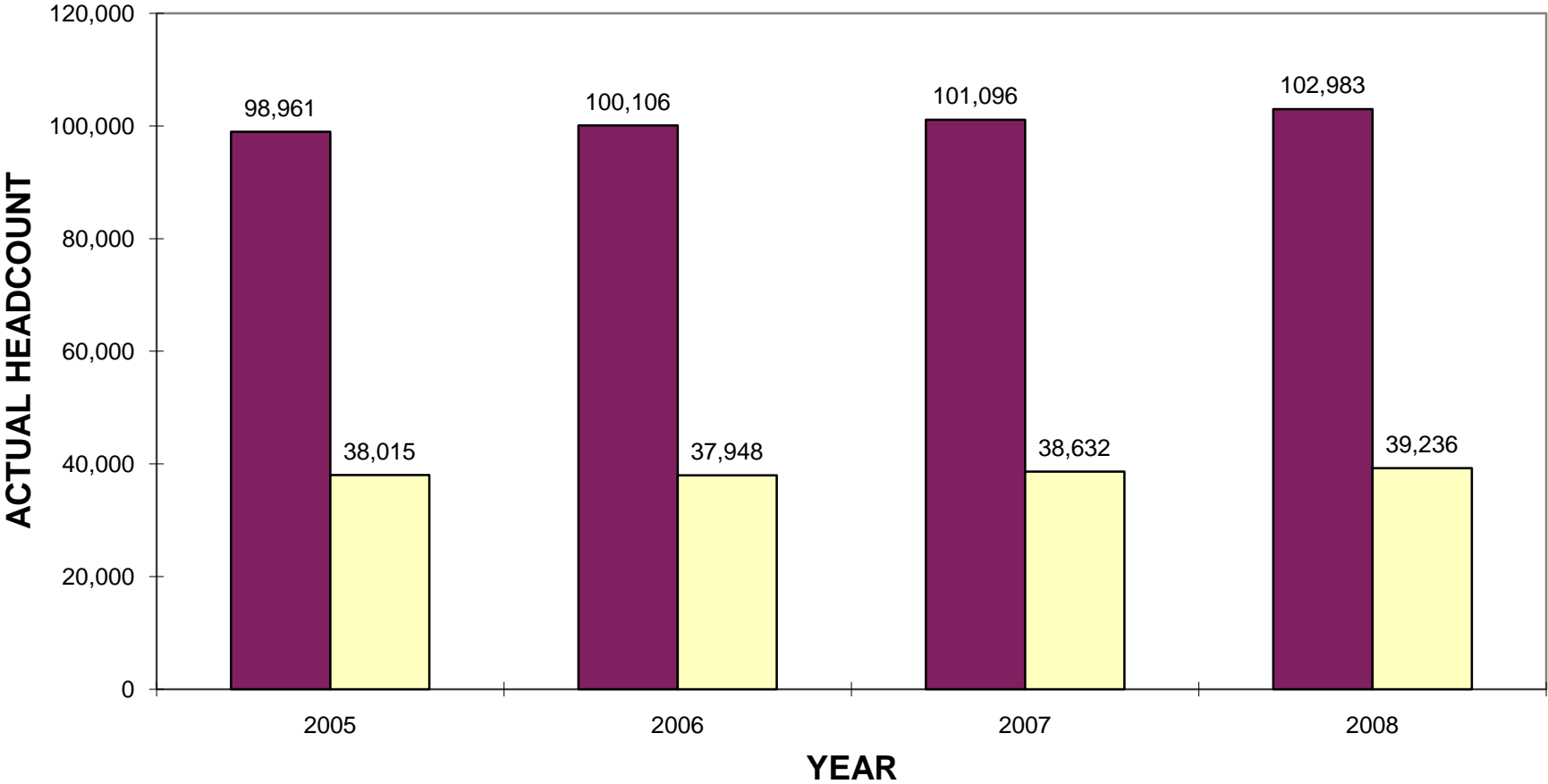
<u>COLLEGE</u>	<u>1999-2000</u>	<u>2000-01</u>	<u>2001-02</u>	<u>2002-03</u>	<u>2003-04</u>	<u>2004-05</u>	<u>2005-06</u>	<u>2006-07</u>	<u>2007-08</u>	<u>2008-09</u>
Allen	380	350	511	573	544	647	617	517	640	703
Anderson	986	1000	1119	1224	1250	1259	1233	1178	1405	1523
Benedict	2642	2820	2837	2866	2717	2676	2491	2467	2558	2831
Bob Jones									3664	3545
Charleston Southern	1851	1913	1946	2435	2075	1897	2213	2262	2395	2348
Claflin	1073	1073	1350	1464	1524	1662	1601	1600	1566	1606
Coker	798	923	873	915	918	930	904	980	1028	956
Columbia	1112	1052	1052	987	923	895	867	1121	984	961
Columbia International	477	517	551	573	564	539	496	430	429	440
Converse	659	658	631	567	595	623	622	639	631	617
Erskine	506	495	572	582	577	604	584	594	567	566
Furman	2620	2629	2640	2650	2855	2682	2707	2615	2350	2614
Limestone	1019	1053	1196	1433	1588	1750	1886	2150	2047	1814
Morris	881	919	953	1034	988	876	843	815	867	893
Newberry	679	647	671	705	716	742	821	832	900	954
North Greenville	1095	1171	1255	1417	1483	1637	1634	1690	1784	1837
Presbyterian	1064	1112	1139	1152	1144	1144	1138	1162	1128	1124
Southern Wesleyan	1411	1640	1879	1896	1819	1923	1906	1724	1714	1604
Spartanburg Methodist	463	515	578	584	693	721	691	749	757	716
Voorhees	759	600	497	683	836	844	602	660	557	547
Wofford	<u>1084</u>	<u>1072</u>	<u>1097</u>	<u>1069</u>	<u>1145</u>	<u>1146</u>	<u>1158</u>	<u>1228</u>	<u>1306</u>	<u>1364</u>
<b>TOTAL STUDENTS</b>	<b>21559</b>	<b>22159</b>	<b>23347</b>	<b>24809</b>	<b>24954</b>	<b>25197</b>	<b>25014</b>	<b>25413</b>	<b>29277</b>	<b>29563</b>

# APPENDIX I

## SOUTH CAROLINA RESIDENT FULL-TIME STUDENTS AT THE TWENTY-ONE COLLEGES PARTICIPATING IN THE SC TUITION GRANTS PROGRAM (FALL OPENING ENROLLMENT)

<u>COLLEGE</u>	<u>1999-2000</u>	<u>2000-01</u>	<u>2001-02</u>	<u>2002-03</u>	<u>2003-04</u>	<u>2004-05</u>	<u>2005-06</u>	<u>2006-07</u>	<u>2007-08</u>	<u>2008-09</u>
Allen	320	207	217	286	468	322	387	394	494	555
Anderson	824	877	963	1108	1081	1090	1062	959	1187	1271
Benedict	1981	2246	2182	2184	2025	1886	1758	1618	1516	1545
Bob Jones									1040	1031
Charleston Southern	1372	1479	1538	1986	1688	1486	1725	1881	1925	1897
Claflin	919	923	1156	1244	1342	1418	1374	1384	1309	1300
Coker	674	816	773	805	818	819	771	856	896	841
Columbia	1061	997	1001	924	870	829	793	812	883	863
Columbia International	193	219	222	217	184	180	179	155	168	182
Converse	438	456	455	416	424	431	429	423	455	447
Erskine	395	369	448	441	427	403	371	402	413	418
Furman	876	919	818	807	814	786	796	775	707	802
Limestone	814	814	949	1161	1330	1444	1521	1774	1606	1445
Morris	782	793	813	1034	838	739	708	709	749	759
Newberry	563	550	574	606	598	599	637	638	703	756
North Greenville	953	975	1026	1112	1145	1275	1251	1311	1335	1164
Presbyterian	604	668	660	686	680	667	693	721	718	719
Southern Wesleyan	1181	1408	1611	1629	1506	1578	1582	1437	1405	1292
Spartanburg	421	436	508	526	631	656	637	695	705	655
Voorhees	557	403	285	453	614	632	416	448	382	402
Wofford	<u>705</u>	<u>735</u>	<u>735</u>	<u>698</u>	<u>755</u>	<u>740</u>	<u>741</u>	<u>764</u>	<u>786</u>	<u>805</u>
<b>TOTAL STUDENTS</b>	<b>15633</b>	<b>16290</b>	<b>16934</b>	<b>18323</b>	<b>18238</b>	<b>17980</b>	<b>17831</b>	<b>18156</b>	<b>19382</b>	<b>19149</b>

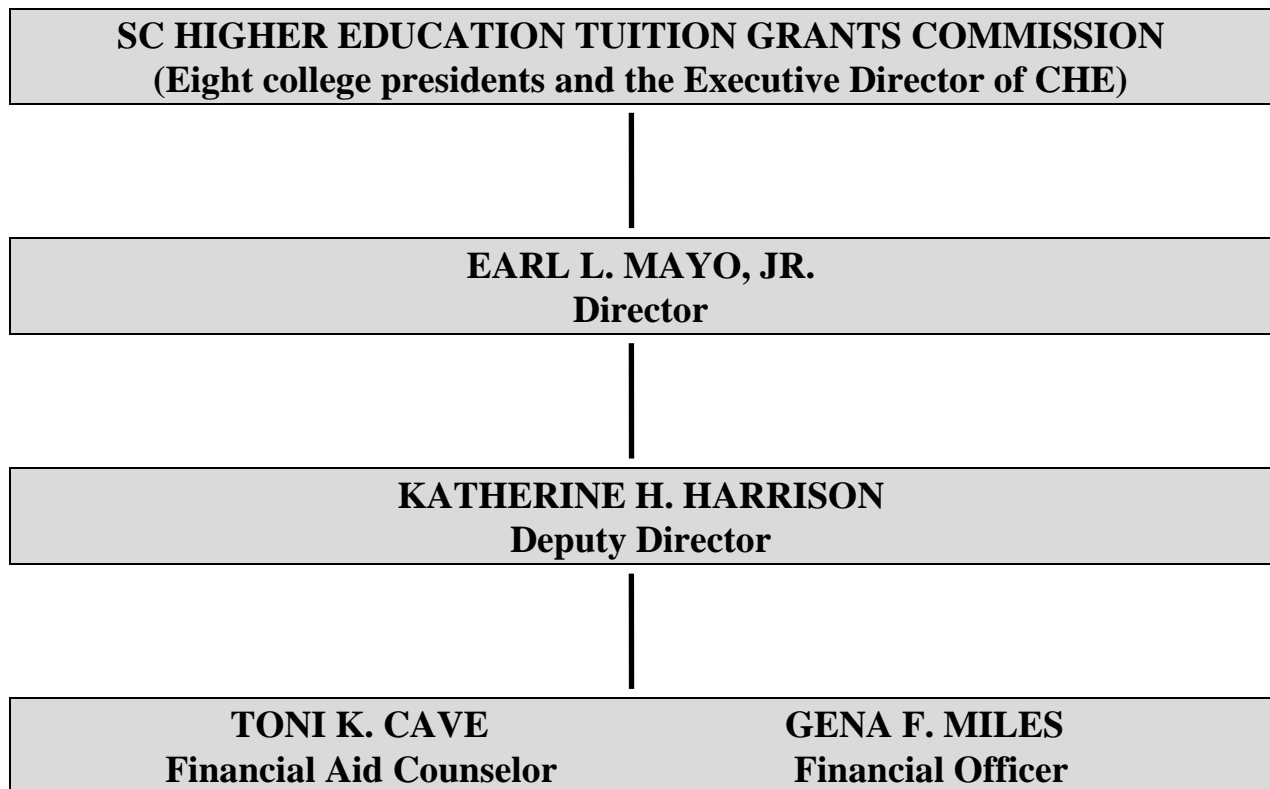
**APPENDIX J**  
**COLLEGE FALL HEADCOUNT ENROLLMENTS**  
**PUBLIC SENIOR VS. PRIVATE SENIOR INSTITUTIONS**



# APPENDIX K

## SOUTH CAROLINA HIGHER EDUCATION TUITION GRANTS COMMISSION

### ORGANIZATIONAL CHART



<b>Total Number of Documents Printed:</b>	<b>225</b>
<b>Cost Per Unit:</b>	<b>\$2.40</b>
<b>Total Printing Cost - SC Higher</b>	
<b>Education Tuition Grants Commission:</b>	<b>\$540.00</b>